



Tourism



Dive



Pleasure

Gnautic has been building quality boats since 1980's. Gnautic serve proudly as commercial, tourism recreational and sportfishing use around the world.

We custom make your boat's interior to your specification!

Visit Us!
Gnautic.com



Gkat 3000 CC



SPECIFICATIONS

LENGTH: 30'

APPROX WEIGHT: 6000 LBS

BEAM: 9'8"

HORSEPOWER MAX CAPACITY: 2X115 HP-2X250 HP

DRAFT: 13"

FUEL CAPACITY: 2X80 GAL



STANDARD FEATURES

FIBERGLASS,SELF- BAILING

WINDSHIELD

ALUMINUM SCH 40 TIP TOP

ALUMINUM SCH 40 BOWL RAIL

STAINLESS STEEL HARDWARE

STORAGE BOXES

LEANIG POST

BOW PULPIT

ANCHOR ROLLER

WALK IN CONSOLE

FISH BOX

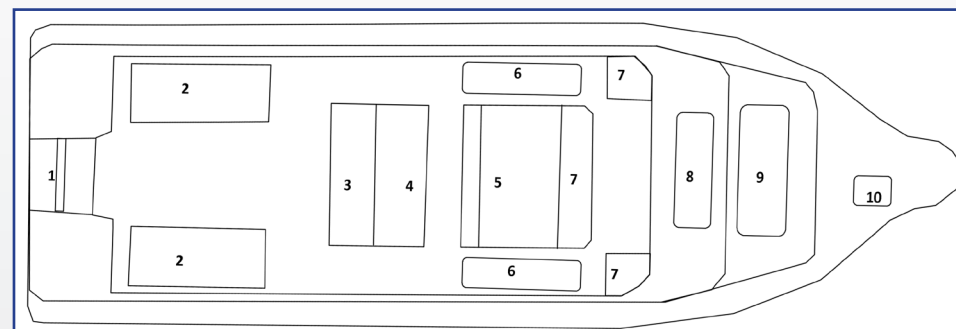
FOUR STEP LADDER

WATER WASH DOWN

HEAVY DUTY RUB RAIL

CUSHIONS IN ALL SEATS

PORTA POTTI



1 TRANSOM DOOR

2 FISH BOX

3 SEAT/STORAGE

4 LEANING POST

5 CONSOLE

6 STORAGE BOX

7 SEATS

8 WRAP- OROUND

9 STORAGE BOX

10 ANCHOR STORAGE

Gkat 2800 SC



SPECIFICATIONS

LENGTH: 29'1"

APPROX WEIGHT: 5500 LBS

BEAM: 9'8"

HORSEPOWER MAX CAPACITY: 2X115-2X250 HP

DRAFT: 13"

FUEL CAPACITY: 2X80 GAL



STANDARD FEATURES

FIBERGLASS, SELF BAILING

WINDSHIELD

ALUMINUM SCH 40 TIP TOP

ALUMINUM SCH 40 BOWL RAIL

STAINLESS STEEL HARDWARE

STORAGE BOXES

LEANING POST

BOW PULPIT

ANCHOR ROLLER

WALK IN CONSOLE

FISH BOX

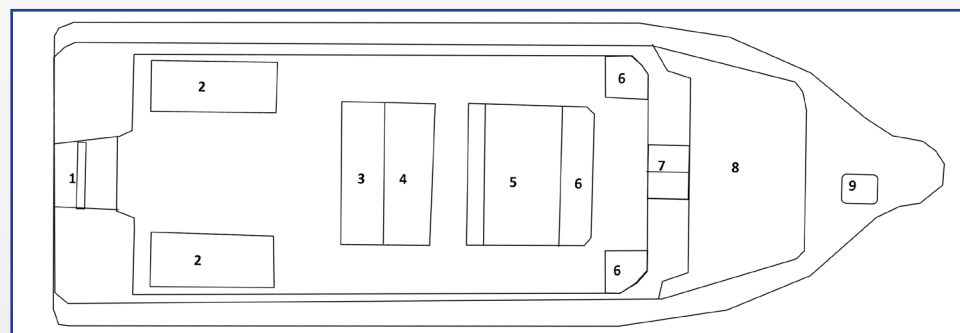
LADDER

CUSHIONS IN ALL SEATS

WATER WASH DOWN

HEAVY DUTY RUB RAIL

PORTA POTTI



1 TRANSOM DOOR

2 FISH BOX

3 SEAT/STORAGE

4 LEANING POST

5 CONSOLE

6 SEATS

7 CUDDY DOOR

8 CUDDY CABIN

9 ANCHOR STORAGE



Gkat 3500 PC



SPECIFICATIONS

LENGTH: 35'5" WP 34'6"

APPROX WEIGHT: 7500 LBS

BEAM: 12'

HORSEPOWER MAX CAPACITY: 2X300 HP

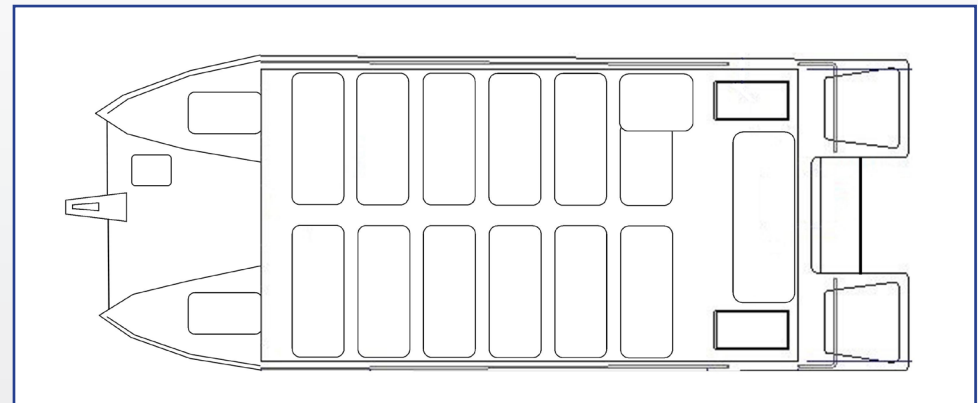
FUEL CAPACITY: 2X80 GAL OR 2X111 GAL



STANDARD FEATURES

SEATS FOR 55 PASSENGERS
FIBERGLASS, SELF BAILING
CONSOLE WITH WINDSHIELD
ALUMINUM SCH40 TIP TOP
ALUMINUM SCH 40 BOWL RAIL
STAINLESS STEEL HARDWARE
STORAGE BOXES
ANCHOR ROLLER
LADDER

HEAVY DUTY RUB RAIL
PORTA POTTI



Gkat 3500 DC



SPECIFICATIONS

LENGTH: 35'5" WP 34'6"

APPROX WEIGHT: 8000 LBS

BEAM: 12'

HORSEPOWER MAX CAPACITY: 2X300 HP

FUEL CAPACITY: 2X80 GAL OR 2X111 GAL



STANDARD FEATURES

FIBERGLASS, SELF BAILING

32 PASSENGERS

60 TANKS

WINDSHIELD

CONSOLE

ALUMINUM SCH 40 TIP TOP

ALUMINUM SCH 40 BOWL RAIL

STAINLESS STEEL HARDWARE

STORAGE BOXES

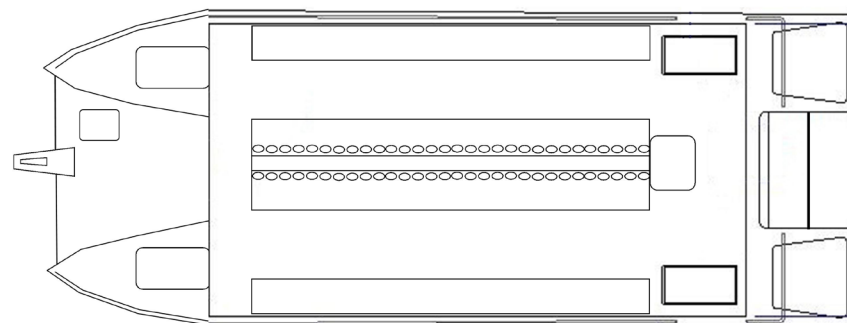
ANCHOR ROLLER

DIVING LADDER

CUSHIONS IN ALL SEATS

HEAVY DUTY RUB RAIL

PORTA POTTI



Gkat 3500 FC



SPECIFICATIONS

LENGTH: 35'5" WP 34'6"

APPROX WEIGHT: 7500 LBS

BEAM: 12'

HORSEPOWER MAX CAPACITY: 2X300 HP

FUEL CAPACITY: 2X80 GAL OR 2X111 GAL



STANDARD FEATURES

FIBERGLASS, SELF BAILING

32 PASSENGERS

60 TANKS

WINDSHIELD

CONSOLE

ALUMINUM SCH 40 TIP TOP

ALUMINUM SCH 40 BOWL RAIL

STAINLESS STEEL HARDWARE

STORAGE BOXES

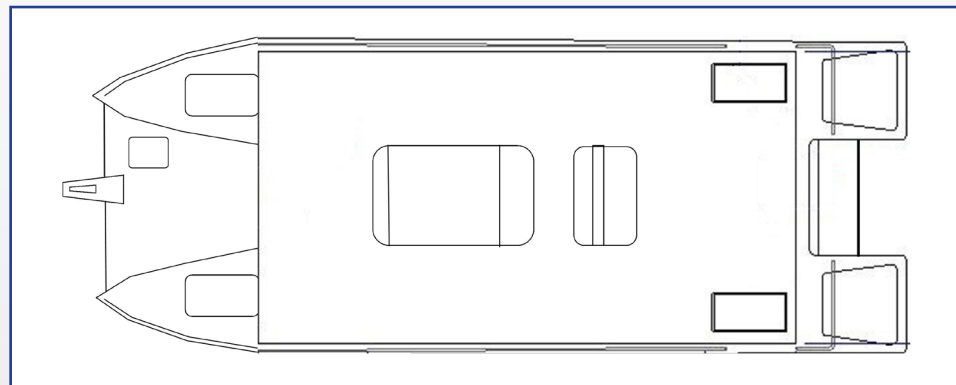
ANCHOR ROLLER

DIVING LADDER

CUSHIONS IN ALL SEATS

HEAVY DUTY RUB RAIL

PORTA POTTI



Gkat 3500 XW



SPECIFICATIONS

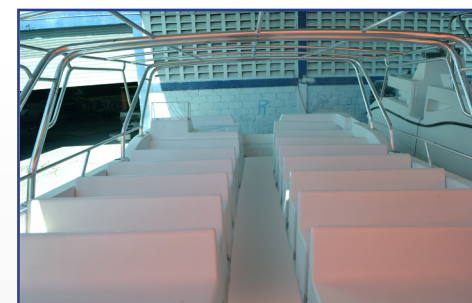
LENGTH: 35'5" WP 34'6"

APPROX WEIGHT: 7500 LBS

BEAM: 13'

HORSEPOWER MAX CAPACITY: 2X300 HP

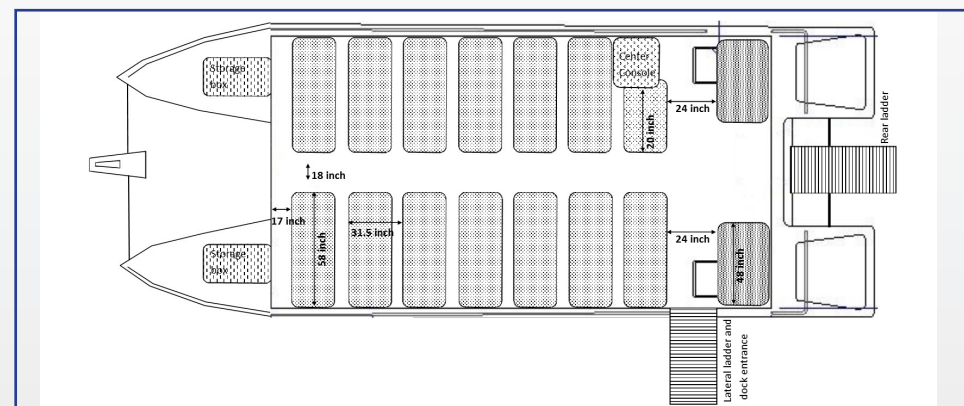
FUEL CAPACITY: 2X80 GAL OR 2X111 GAL



STANDARD FEATURES

SEATS FOR 55 PASSENGERS
FIBERGLASS, SELF BAILING
CONSOLE WITH WINDSHIELD
ALUMINUM SCH40 TIP TOP
ALUMINUM SCH 40 BOWL RAIL
STAINLESS STEEL HARDWARE
STORAGE BOXES
ANCHOR ROLLER
LADDER

HEAVY DUTY RUB RAIL
PORTA POTTI



Gkat 1800



SPECIFICATIONS

LENGTH: 17'10"
 APPROX WEIGHT: 1600 LBS
 BEAM: 7'2"
 HORSEPOWER MAX CAPACITY: 115 HP
 DRAFT: 10"
 FUEL CAPACITY: 20 GAL



STANDARD FEATURES

FIBERGLASS, SELF-BAILING
 STAINLESS STEEL CLEATS
 FISH BOX

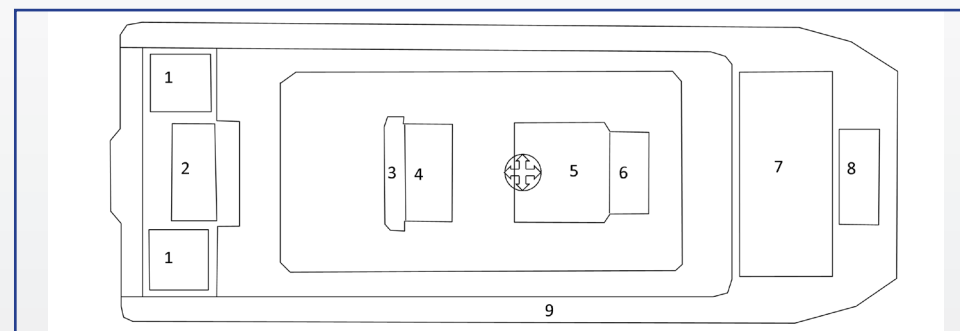
WINDSHIELD

ALUMINUM SCH 40 RAIL

STAINLESS STEEL HARDWARE AND

FASTENERS

CUSHIONS IN ALL SEATS



1 ACCESS HATCH

2 BAIT WELL

3 FLIP-FLOP SEAT

4 FUEL TANK

5 CONSOLE

6 SEAT WITH STORAGE

7 FISH BOX

8 ANCHOR LOCKER

9 RAIL

Gpro 2500



SPECIFICATIONS

LENGTH OVER ALL: 26'

APPROX WEIGHT: 4000 LBS

DRAFT: 1' 5"

BEAM: 8' 6"

HORSEPOWER MAX CAPACITY: 2X250 HP

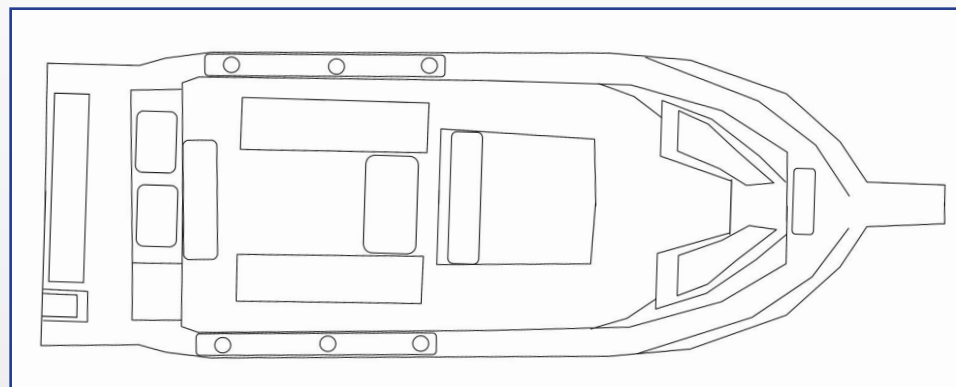
FUEL TANK CAPACITY: 80 GAL



STANDARD FEATURES

100% HAND LAMINATED
WOODFREE BACKING ON ALL
CUSHIONS
PLASTIC FUEL TANK 80 GALS
WELDED ALUMINUM SCH 40 BOW
RAIL
WELDED ALUMINUM SCH 40 TIP
TOP
SELF-BAILING COCKPIT
NON-SKID DECK
HYDRAULIC STEERING

AUTOMATIC BILGE PUMP
THRU-HULL LIVEWELL PLUMBING
WASHDOWN
HEAD COMPARTMENT IN CONSOLE
WALK-THRU TRANSOM WITH
DOOR
ANCHOR ROLLER
LADDER
CUSHIONS IN ALL SEATS
BOW FILLER PIECE WITH CUSHION



Gpro 2200



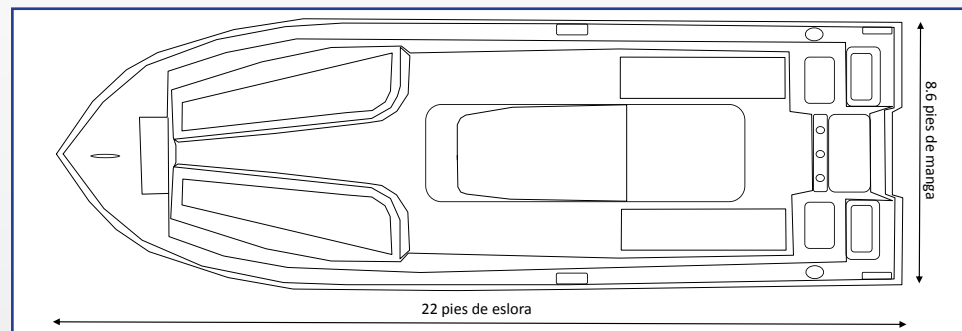
SPECIFICATIONS

LENGTH: 22'
APPROX WEIGHT: 3000 LBS
BEAM: 8'6"
DRAFT: 17"
HORSEPOWER MAX CAPACITY: 250 HP
FUEL CAPACITY: 57 GAL



STANDARD FEATURES

100% HAND LAMINATED	THRU-HULL LIVEWELL PLUMBING
WOODFREE BACKING ON ALL	WASHDOWN
CUSHIONS	HEAD COMPARTMENT IN CON-
PLASTIC FUEL TANK 57 GALS	SOLE
WELDED ALUMINUM SCH 40 BOW	WALK-THRU TRANSOM WITH
RAIL	DOOR
WELDED ALUMINUM SCH 40 TIP	ANCHOR ROLLER
TOP	LADDER
SELF-BAILING COCKPIT	CUSHIONS IN ALL SEATS
NON-SKID DECK	BOW FILLER PIECE WITH CUSHION
HYDRAULIC STEERING	
AUTOMATIC BILGE PUMP	





Speedboat 12



SPECIFICATIONS

LENGTH.: 12'
APPROX .WEIGHT: 300 LB
BEAM: 5'
HORSEPOWER MAX CAPACITY: 40 HP
FUEL CAPACITY: N/A

W-14 FB



SPECIFICATIONS

LENGTH.: 14'
APPROX .WEIGHT: 275LB
BEAM: 5'
HORSEPOWER MAX CAPACITY: 30 HP
FUEL CAPACITY: 20 GAL



W-22 PB



SPECIFICATIONS

LENGTH: 22'
APPROX WEIGHT: 1200 LBS
BEAM: 6.5'
HORSEPOWER MAX CAPACITY: 60 HP
FUEL CAPACITY: N/A

W-22 DB



SPECIFICATIONS

LENGTH: 22'
APPROX WEIGHT: 1200 LBS
BEAM: 6.5'
HORSEPOWER MAX CAPACITY: 60 HP
FUEL CAPACITY: N/A

W-22 FB



SPECIFICATIONS

LENGTH: 22'
APPROX WEIGHT: 1600 LBS
BEAM: 6.5'
HORSEPOWER MAX CAPACITY: 115 HP
FUEL CAPACITY: N/A



W-27 FB



SPECIFICATIONS

LENGTH: 27'
APPROX WEIGHT: 2600 LBS
BEAM: 6.10'
HORSEPOWER MAX CAPACITY: 2X115 HP
FUEL CAPACITY: N/A

W-29 PB



SPECIFICATIONS

LENGTH: 29'
APPROX WEIGHT: 3400 LBS
BEAM: 8'
HORSEPOWER MAX CAPACITY: 2X200 HP
FUEL CAPACITY: N/A

W-29 FB



SPECIFICATIONS

LENGTH: 29'
APPROX WEIGHT: 3400 LBS
BEAM: 8'
HORSEPOWER MAX CAPACITY: 2X200 HP
FUEL CAPACITY: N/A









Boats and Catamarans

Gkat

Gpro



www.gnautic.com
info@gnautic.com